

The Ultimate Guide

Spray Foam Insulation
for Barndominiums





Introduction

Facing problems

Building or owning a barndominium in Central Texas comes with unique challenges that traditional homes don't face. You're dealing with metal structures that can **rust**, **extreme temperature swings** from scorching summers to cold winter fronts, and **energy bills** that can spiral out of control if you don't insulate correctly.

The question isn't whether to insulate your barndominium – it's how to do it the right way.

At Spray Foam of Texas, we've insulated hundreds of barndominiums across Central Texas, from Bell County to Austin. We've seen what works, what fails, and what costs homeowners and contractors thousands in repairs down the road.

This guide will walk you through everything you need to know about barndominium spray foam insulation so you can make the right decision for your project.

Why Insulating a Barndominium is Essential

Choosing Between the Right Way and the Cheap Way

Insulation is always something you should invest in upfront. Yes, we are a spray foam company, so it's not a surprise that we'll tell you that. But we say this from experience: homeowners and contractors who cut corners on insulation face premature failures, rust damage, astronomical energy bills, and pest infestations that could have been easily prevented.

These are a few consequences of going cheap:

→ Moisture, Rust, and Condensation

Metal buildings face a unique enemy that wood-frame homes don't: condensation. When you have hot temperatures outside and cold air conditioning inside (or vice versa), that temperature differential creates moisture between your metal panels and interior walls.

Without a proper vapor seal, that moisture leads to rust. It might not show up in the first five years, but after ten years? You'll start seeing rust eating away at your metal structure. Once rust starts, it's a slow deterioration that compromises your entire building.

→ Energy Bills That Keep Climbing

Poor insulation in a barndominium is uncomfortable and expensive. Without an airtight thermal envelope, your HVAC system works overtime trying to maintain comfortable temperatures. In Central Texas, where we see 100+ degree summers and sudden cold fronts in winter, an inefficient barndominium can cost you hundreds of dollars extra every month in utility bills.

→ Rodent Intrusion and Air Leaks

Barndominiums are often built in rural areas where field mice and other pests actively search for warm places to nest, especially in winter. Traditional batting insulation provides the perfect nesting material and doesn't seal out these unwanted guests. We've seen rodents tear up batting insulation, create health hazards, and cause thousands in damage.

→ The DIY Spray Foam Disaster

If you know all that and are thinking you can still try and go cheap by DIY'ing, we wouldn't recommend it. However, we do see the appeal. DIY spray foam kits are readily available at hardware stores; they seem straightforward, and they promise savings. But here's what we see when we're called to redo a DIY job: a 50% failure rate.

That means that even if the application goes well, you might only get 50% of the expected yield because these chemicals require precise temperature control and proper mixing ratios. A standard DIY kit costs around \$750 but might only give you a fraction of the coverage you need. For a full barndominium, that investment adds up fast. And, if it fails, you're stuck with odors, poor performance, wasted money, and wasted time.

The Best Insulation for Barndominiums: Why Spray Foam Wins, Every Time

→ Vs. Batt Insulation (Fiberglass)

Batt insulation is the traditional pink or yellow fiberglass material commonly used in wood-frame homes. For barndominiums, however, it has serious drawbacks:

Problems with batt insulation:

- Doesn't create a vapor barrier, allowing moisture to reach metal and cause rust
- Collapses over time, especially in the thin wall cavities of barndominiums, leaving gaps at the top
- Provides nesting material for rodents and pests
- Allows air infiltration through wall cavities, reducing energy efficiency
- Requires additional vapor barrier installation

→ Vs. Blown-In Insulation

Blown-in insulation (loose-fill cellulose or fiberglass) is sometimes used in attic spaces but presents problems for barndominiums:

Issues with blown-in insulation:

- Only works in attic spaces, leaving your mechanicals working overtime in the heat during summer
- Turns to dust over time, losing R-value
- Doesn't seal air leaks
- Provides no structural support
- Allows temperature extremes in unconditioned spaces

→ Vs. Rigid Board Insulation

Rigid foam board insulation can be used in metal building insulation applications, but it doesn't seal out air leaks, and requires careful installation to prevent air gaps.

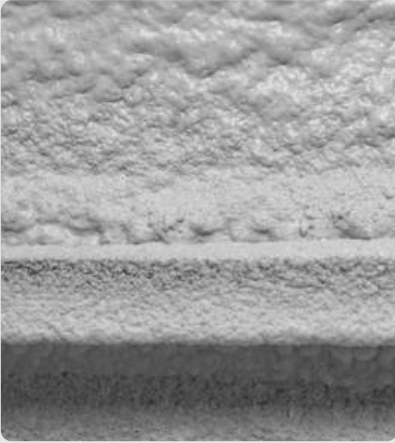
→ Why Spray Foam Is the Clear Winner

The right spray foam system protects your barndominium, saves on energy bills, and ensures comfort for years to come.

When you invest in insulating your barndominium the right way with quality closed-cell spray foam:

- You create a permanent vapor barrier that protects against moisture and rust
- You add structural support to your metal panels, making them more resistant to hail damage
- You seal the thermal envelope, preventing air leaks and pest intrusion
- You save an average of 40% on utility bills compared to traditional insulation
- You gain soundproofing benefits, reducing noise from rain, hail, and outside activity
- You get peace of mind with professional installation and warranty coverage
- And your barndominium remains comfortable, dry, and structurally sound for decades

How to Insulate a Barndominium The Right Way



→ Closed-Cell

Closed-Cell Spray Foam is the gold standard for barndominium insulation.

Here's what makes it special:

Closed-cell spray foam is a type of insulation where the tiny foam bubbles (cells) are completely closed off from one another, creating a dense and rigid structure.

Think of it like a styrofoam cooler, solid and moisture-proof.



→ Open-Cell

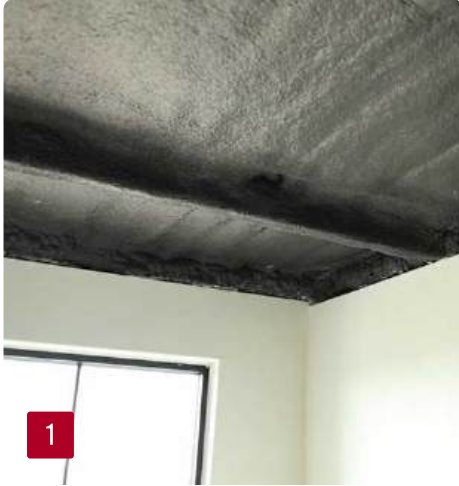
Open-Cell Spray Foam is softer and spongy (like a kitchen sponge) with cells that are broken or open. While it costs less, it's not waterproof, so air and moisture can pass through.

The right way to insulate a barndominium

The right way to insulate a barndominium starts with understanding what you're trying to achieve.

You need to create a **complete thermal and moisture barrier** while maintaining **structural integrity** (that means you want to seal any and every place where air and water can get into the building, no matter how small that opening may be).

How to Insulate a Barndominium with Spray Foam



→ Step 1: Closed-Cell Spray Foam on All Metal Surfaces

Apply a minimum of one to one and a half inches of closed-cell spray foam throughout the outer shell on your roof and walls. This creates a vapor seal against the metal and provides structural stability to the building.

→ Step 2: Sealing the Envelope

Proper insulation isn't just about the walls and ceiling, it's about sealing every gap where air can infiltrate. This means:

- Sealing around all doors and windows with poly-seal
- Closing any gaps where sunlight penetrates
- Creating an airtight envelope that locks out the elements and keeps your cool (or heated) air inside, where it belongs.

This envelope sealing is what transforms your barndominium from a metal building into an efficient home that performs like a Yeti cooler, keeping temperatures consistent regardless of what's happening outside.

→ Step 3: Additional Insulation for Maximum Efficiency

Once you have that closed-cell vapor barrier in place, you can add open-cell spray foam on top. Since the closed-cell layer already created the moisture barrier, the open-cell foam adds additional R-value without needing vapor barrier properties.

Barndominium Insulation Cost: What to Budget

With all that in mind, let's talk numbers. Yes, the upfront investment is higher on spray foam. You'll spend approximately 50% more than traditional insulation. But the benefits far outweigh the costs, no matter how you look at it.

Spray foam is priced by board feet (square foot by inch). The industry average sits around \$1.30 per board foot. For a standard 2,000 square foot barndominium with ten-foot walls and standard roof pitch, you're looking at approximately 10,000 board feet, which comes out to around \$13,000 for a complete, properly insulated home.

This assumes three inches on the ceiling and two inches on the walls, the recommended specification for an efficient barndominium in Central Texas.

Depending on the complexity of your project, insulation quality, and contractor, you might see prices ranging from \$5 to \$10 per square foot of living space at the highest premium end. Larger homes with more foam typically get better per-foot pricing.

The 40% average savings on utility bills means **your insulation investment pays for itself over time.**

The return on investment is clear, and the longevity means **you'll never need to replace it.**

40%

Average savings

Want a custom insulation quote for your barndominium?

Contact our team for a **free consultation** and see exactly what your project will cost.

☎ 254-500-8370

✉ contact@sprayfoamoftexas.com



Recommended R-Values for Barndominiums

R-value recommendations:

Ceilings: R-22 to R-38

- R-22 is the old code minimum and suitable for most applications
- R-38 provides maximum efficiency for those who want the best performance
- Since most barndominiums are outside city limits, newer codes may not apply, but building to higher standards always pays off

Walls: R-14

- This typically requires two inches of closed-cell spray foam
- Provides excellent thermal performance while maintaining reasonable wall thickness

These **R-values** represent the minimum for comfort and efficiency.

Your budget determines how much foam you want, but these standards give you an **efficient home that performs well year-round.**

Common Mistakes and How to Avoid Them

Over the years, we've seen every mistake in the book when it comes to barndominium insulation. Here's how to avoid the most costly ones:

Mistake #1: DIY Installation

We mentioned the 50% failure rate earlier, but it's worth repeating. DIY spray foam kits seem economical, but the reality is harsh. These chemicals operate in a reactor at specific temperatures and pressures. If conditions aren't right, the foam doesn't cure properly, leaving you with:

- Bad odors that won't dissipate
- Poor adhesion and coverage
- Wasted material (you might only get 50% of rated yield)
- Potential health hazards from improper application

Mistake #2: Using Low-Quality Foam

Not all spray foam is created equal. Some contractors use cheaper, generic foam that hasn't been properly tested or might even come from Mexico without proper specifications. Bad foam causes odors and performance issues that can't be fixed without removal and replacement.

Mistake #3: Skipping Proper Preparation

Spray foam application isn't just about spraying chemicals on metal. Professional preparation includes:

- Sealing the house with low-pressure guns before high-pressure application
- Draping and protecting water heaters, HVAC units, doors, windows, and floors
- Ensuring proper ventilation during application
- Using the right equipment for consistent, quality results

Contractors who skip preparation can easily ruin doors, windows, and floors, or paint your metal building's exterior with overspray.

Mistake #4: Hiring Brokers Instead of Direct Installers

Some spray foam companies are really just sales brokers. They take your information, sell the job to the lowest bidder, and hand it off to "Chuck in a truck"—some subcontractor you've never met. When something goes wrong, or you need warranty work, you're calling a salesperson who has no control over the installer.

How to Vet Your Spray Foam Provider

So, how do you avoid those mistakes? By hiring the right spray foam company. Not all spray foam contractors are created equal. Here's your checklist for vetting providers:

✓ Check References and Insurance

Don't be afraid to ask for:

- References from recent barndominium projects – Call them and ask about their experience,
- Certificates of insurance – This protects you if something goes wrong during installation
- Photos of completed work – See their quality firsthand

It's your home or your client's home. You have every right to ensure you're working with professionals.

✓ Verify They're Direct Installers

Make sure the company you hire is actually doing the work:

- Are you the installer, or do you subcontract?
- Who will I call if I have warranty issues?
- Can I meet the crew before installation?

Avoid brokers and middlemen who add costs without adding value.

✓ Confirm Chemical Specifications

Ask specifically:

- What brand and type of foam are you using?
- Can you provide product specifications?
- Where does your foam come from?
- Has it been tested and certified?

Quality contractors will readily provide this information. Keep in mind that if their foam doesn't come from a reputable company or is a cheaper product, the product has a strong odor and doesn't seal properly. The foam should be odorless after installation.

✓ Understand the Warranty

Ask about warranty terms:

- How long is your warranty?
- What does it cover?
- Have you ever had to honor warranty work?

At Spray Foam of Texas, we offer a two-year warranty because realistically, if anything's going to happen, it happens in the first 12 months as you go through a full cycle of Central Texas weather. Most issues show up within the first year. And if that happens, we'll come back and make it right – that's our commitment.

✓ Evaluate Their Preparation Process

Ask detailed questions:

- How do you protect doors, windows, and floors?
- What type of equipment do you use?
- Do you seal the envelope before high-pressure application?
- How do you protect mechanicals like water heaters and HVAC units?

The answers will tell you whether they're professionals or just sprayers.

Why Choose Spray Foam of Texas

Doing it right the first time means you'll never have to do it again. And that's important to us.

Here's what sets us apart:



We Do What We Say We're Going to Do

Our reputation is built on reliability and attention to detail. When we commit to a project, we see it through with professionalism.



We Handle Custom Projects

Not every barndominium is standard, and we take the time to handle custom projects that other contractors won't touch. Whether you have exposed beams, unique ceiling treatments, or complex architectural details, we have the expertise to insulate it properly.



We're Direct Installers

When you call Spray Foam of Texas, you're getting the same team from estimate to installation to warranty service.



We Stand Behind Our Work

Our two-year warranty isn't just a piece of paper. If your insulation cracks, we'll be back out to fix it. We guarantee our work will be done right.



We Service Central Texas

From Bell County to Austin, including Georgetown, Round Rock, Leander, Kempner, and Dripping Springs, we know this market. We understand the unique challenges of insulating barndominiums in our climate, and we have the experience to do it right.

Ready to Insulate Your Barndominium the Right Way?

Choosing the right insulation system and the right contractor makes all the difference between a barndominium that performs for decades and one that costs you money, comfort, and headaches.

Whether you're a homeowner planning your dream barndominium or a contractor looking for a reliable spray foam partner in Central Texas, Spray Foam of Texas is here to help.

We offer:

- ✓ Free estimates
- ✓ Insulation approach consulting
- ✓ Quality materials from trusted manufacturers
- ✓ Expert installation by experienced crews
- ✓ Two-year warranty on all work

**Don't gamble with your barndominium insulation.
Do it right the first time.**

Schedule your free estimate today

and discover why spray foam insulation is the smart choice for barndominiums in Central Texas.'

[Schedule an In-Person Estimate](#)



Frequently Asked Questions About Barndominium Insulation

01. Do barndominiums need insulation?

Yes, barndominiums absolutely need insulation.

Metal buildings are highly conductive, meaning they transfer heat and cold rapidly. Without proper insulation, a barndominium becomes unbearably hot in summer and freezing in winter. More importantly, the temperature differential between inside and outside creates condensation on metal surfaces, leading to rust and structural damage over time.

Proper spray foam insulation creates a vapor barrier that prevents moisture damage, seals air leaks that waste energy, and maintains comfortable indoor temperatures year-round. Skipping insulation will result in astronomical energy bills, premature rust damage, and an uncomfortable living space.

02. What is the best insulation for a barndominium?

Closed-cell spray foam insulation is the best insulation for a barndominium.

Unlike batt insulation or blown-in insulation, closed-cell spray foam creates a complete vapor barrier directly against metal surfaces, preventing the condensation that causes rust. It adds structural rigidity to thin metal panels, seals every air leak, and provides superior R-value per inch compared to traditional insulation.

While the upfront cost is higher than fiberglass or other types of insulation, spray foam saves an average of 40% on utility bills, lasts forever without settling, and prevents pest infiltration. For metal building insulation, nothing performs as well as quality closed-cell spray foam applied by professional contractors.

03. Can you insulate a barndominium yourself?

While DIY spray foam kits are available, we strongly discourage DIY barndominium insulation.

Professional spray foam requires precise chemical mixing, proper temperature control, and specialized equipment. DIY kits have approximately a 50% failure rate, and even successful applications often yield only 50% of expected coverage. Failed DIY spray foam causes persistent odors, poor thermal performance, and wasted money. Professional installation ensures proper preparation, complete envelope sealing, correct application, and warranty coverage.

The investment in professional spray foam contractors pays off through guaranteed performance and long-term results.

04. How much does it cost to insulate a 2,000 sq ft barndominium?

A 2,000 square foot barndominium with ten-foot walls and standard roof pitch typically costs around \$13,000 to insulate properly with spray foam.

This assumes approximately 10,000 board feet at \$1.30 per board foot, with three inches of closed-cell foam on the ceiling (R-22 to R-38) and two inches on the walls (R-14). Prices range from \$5 to \$10 per square foot of living space depending on project complexity, custom features, and foam quality.

While this represents a higher upfront investment than batt insulation, the 40% average utility bill savings and permanent performance make spray foam the most cost-effective long-term solution.

05. Is spray foam worth it for barndominiums?

Absolutely. Spray foam insulation is worth every penny for barndominiums.

The 40% average savings on utility bills means the investment pays for itself over time, but the benefits go far beyond energy savings. Spray foam prevents rust by creating a vapor barrier against metal surfaces, eliminates pest infiltration, adds structural support that improves hail resistance, and provides soundproofing from rain and outside noise. Unlike batt insulation that collapses or blown-in insulation that settles, spray foam lasts forever without losing R-value.

For metal building insulation, spray foam is the only solution that addresses all the unique challenges barndominiums face while delivering superior comfort and protection.

06. What R-value do I need for my barndominium?

For barndominiums in Central Texas, we recommend R-22 to R-38 for ceilings and R-14 for walls.

R-22 is the old code minimum and provides adequate performance, while R-38 delivers maximum energy efficiency for those wanting the best results. Most barndominiums are built outside city limits, where newer building codes may not apply, but meeting or exceeding these standards ensures comfort and efficiency.

These R-values translate to approximately three inches of closed-cell spray foam on ceilings and two inches on walls. Your specific needs may vary based on climate, building design, and personal comfort preferences.



Serving Central Texas and beyond

Contact us today to discuss your
barndominium insulation project.

[Schedule an In-Person Estimate](#)

☎ 254-500-8370

✉ contact@sprayfoamoftexas.com

